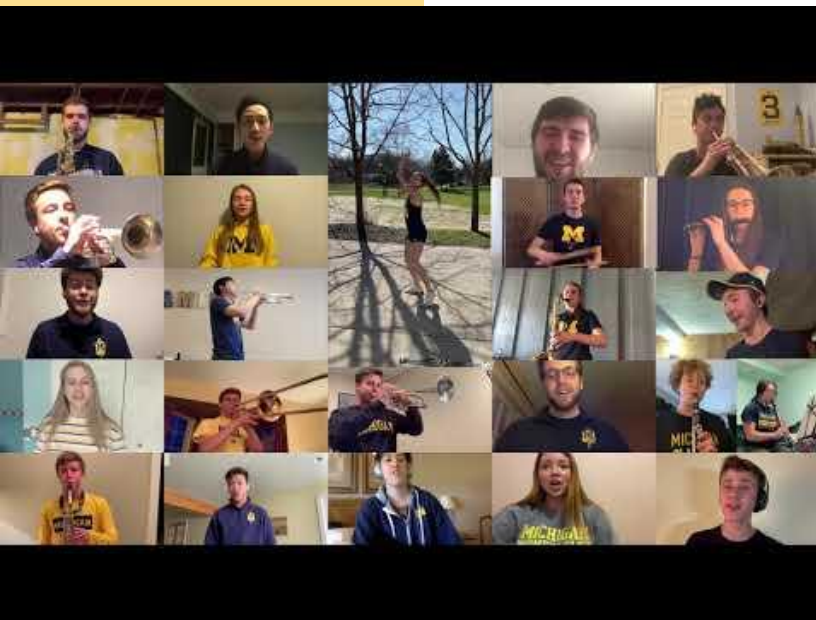


University of Michigan Pre-departure Orientation for Taiwanese Students

密西根大學
台灣新生網上行前說明會



Meet Our Presenters 簡報人介紹



Kate Zheng
(she/her/hers)
Assistant Director,
Global Engagement and
Education Abroad,
International Center



Jake Koelzer
(he/him/his)
Program Adviser,
Global Engagement and
Education Abroad,
International Center



Shih-Ya Chang
(she/her/hers)
Social Work Resident
School of Social Work



Today, we will focus on

我們今天說明會的議程是.....

Campus Life & Support

Immigration

Orientations & Beyond

Q & A



U-M International Center

密西根大學國際中心

Over **10,000** international
students & scholars

From more than **130** countries

[Annual Statistical Report](#)



**Immigration
Health Insurance
Programs**

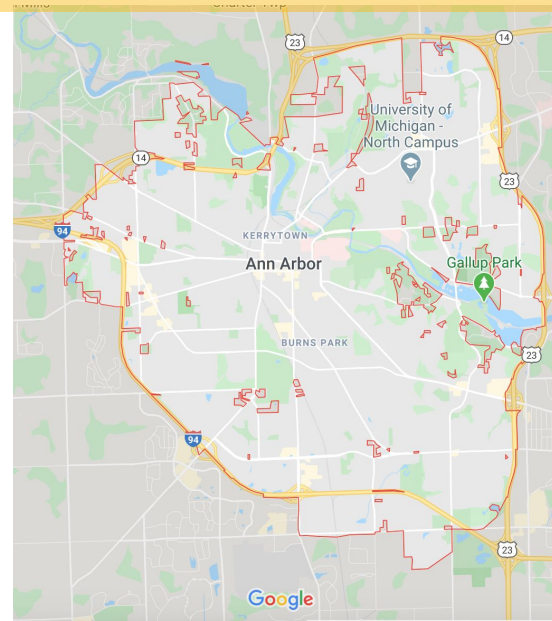
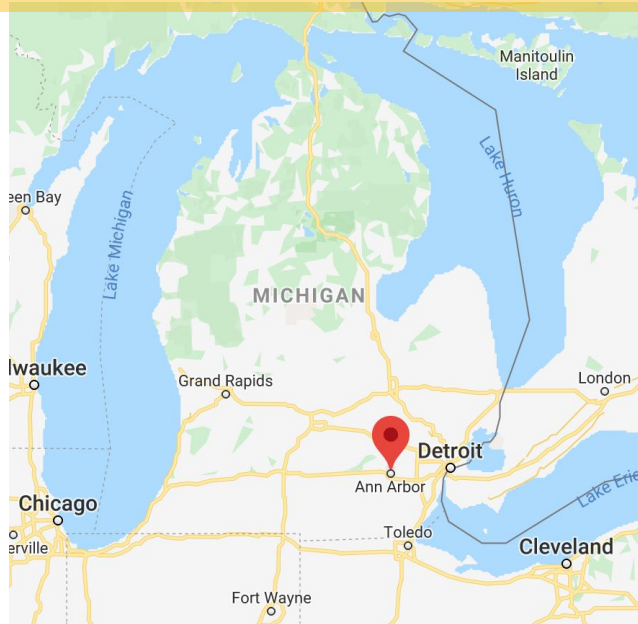
Campus Life & Support

校園生活與支援



Ann Arbor & U-M Campus Map

安娜堡 & 密西根大學地圖



[See details on each Schools & Colleges here.](#)

Ann Arbor Weather

安娜堡天氣

Average Temperatures:

- Spring: 7-22°C / 45-70°F
- Summer: 26-28°C / 80-83°F
- Fall: 9-23°C / 48-70°F
- Winter: -1-1.6°C / 30-35°F

Average Snowfall (Dec-Feb):

- 33-40.6 cm per month
/13-16 inches per month



[Ann Arbor Temperatures: Average by Month](#)
[IC welcome booklet](#)

Public Transportation

公共交通

1. U-M blue buses

- Free
- Connects central, north and south campus
- [Routes](#)
- [COVID-19 Updates](#)



2. The Ride

- Free when using Mcard
- Operates public transportation services in the greater Ann Arbor-Ypsilanti area
- [Routes & Schedules](#)
- [COVID-19 Updates](#)



More Information

Arrival

抵達

- **Nearest Airport: Detroit Metropolitan Airport (DTW)**
- **Transportation options from DTW to Ann Arbor**
 - [Michigan Flyer](#) (\$12/\$15)
 - [Airbus](#) * before & after U-M breaks (\$4)
 - Uber, Lyft (around \$40 -50 to Central Campus)
 - Taxi
 - Your own networks!



[More Information](#)

On-campus Housing 學校住宿

- **Undergraduate students:**
 - Residence halls
 - Use MCards to enter
 - Winter breaks & Summer breaks
 - [Apply Here](#)
- **Graduate students:**
 - Munger Suites (Central Campus)
 - Northwood Townhomes (North Campus)
 - 1st & 15th options for leases start day
 - June 30th as leases end day
 - [Apply Here](#)



[More information here](#)

Off-campus Housing 校外住宿

Many students find housings through

- [U-M Beyond the Diag Website](#)
- [Craig's List](#)
- [安娜堡华人网](#)
- FB housing pages

Recommended: [Attend the virtual Housing Fair](#)

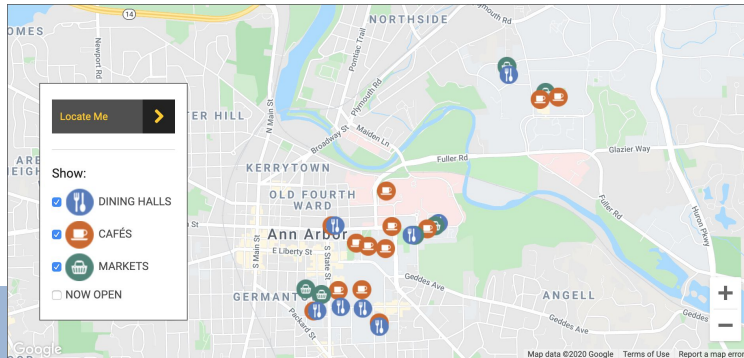
[Student Legal Services](#) can review leases, and be aware of [rental scams](#).

Dining Halls 食堂

- University dining halls provide meals for a variety of needs: Kosher, vegetarian, vegan, gluten free, and halal.
- You can eat as much or as little as you like during your visit.

[Visit MJDining here.](#)

- If you are living in a undergraduate residence hall, you'll have an Unlimited Meal Plan. This means you can enter as many times as you'd like during [regular dining hours](#) and never worry about running out of meals.
- Students living in off-campus apartments can purchase meal plans.



Banking 銀行

- The selection of bank is your personal choice
 - PNC, the official MCard bank
 - Regional banks, national banks, and international banks
 - Find banks that have ATM machines close to where you live
 - Set-up online & mobile banking
- It is okay to switch banks

[Visit the IC's banking webpage here.](#)
[See local banks comparison here.](#)

Paying Tuition and Fees 學費

- Bills are posted to your student's Wolverine Access portal monthly and an email is sent to the student.
- [Parents and Family Authorization](#): set up a "Friend/Family Account" so they can also receive those messages through Wolverine Access.
- U-M accepts [payments](#) on student charges in the form of cash, check, or e-payment.
 - [Optional Payment Plan](#): spread payment over 5 payments without interest.
 - Refer to [2020-2021 Payment Plan Brochure](#)
- International payments can be made through [Flywire](#)



Health and Wellness 健康

International Student Health Insurance Plan

- Automatically enrolled
- Monthly payment posted on Wolverine Access
- Check the coverage highlights
- Dental care coverage

University Health Services (UHS)

- Walk-in visits and appointments available
- Most services are free or have low fees
- Can request interpretation when scheduling



U-M Hospitals - Michigan Medicine: ranked #5 best hospitals in USA and #15 in the world by Newsweek

- International Student Health Insurance plan is accepted.
- Translation services available

Health and Wellness 健康

Immunizations

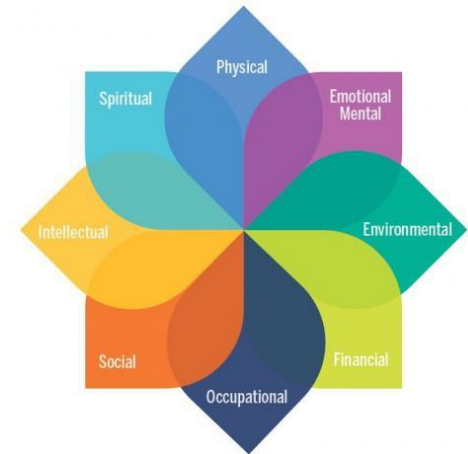
- Not required by U-M or U.S. government
- Recommended to protect your health and the health of others
- Can [get immunizations](#) at UHS for a fee

Counseling and Psychological Services (CAPS)

- Free counseling services
- Counselors speak a variety of languages
- Offers events and group supports
- [SilverCloud Online mental health tool](#)

Recreational Sports

- There are gym facilities, group sessions, and personal trainings, intramural and club sports available



Safety 安全

Housing Safety & Security

- Lock your door

Department of Public Safety and Security (DPSS)

- [U-M Emergency Alert](#)
 - Emergency text/email alerts (bad weather, power outages, school closings, safety concerns)
 - Sign up through Wolverine access
- Save this phone number: (734)763-1131
- [Blue Light Phones](#)

In an emergency, dial 9-1-1



Safety 安全

After-hour Rides

- Free, require MCard
- Available between 8 pm to 2 am

Register Devices

- Register valuable devices through DPSS
- You will receive stickers to paste on your devices
- To report the theft of property on campus, call the Police Department at (734) 763-1131 or report a crime online.

Scams

- Be alert to emails or calls that ask for money
- Call the International Center or the U-M Police Department (734-763-1131).



Academic Resources 學術資源

- Libraries
- Faculty Office Hours
- Advising Centers
- English Language Supports
 - Sweetland Writing Center
 - English Language Institute
 - Language Resources Center
 - Conversation Partners
 - Conversation Circles



U.S. Classroom Expectations 美國課堂

- Relaxed Atmosphere
- Technology Friendly
- Student Centered
- Critical Thinking
- Students Freely Express Opinions
- Active Learning
 - In class discussion/debate
 - Presentation
 - Role-playing
 - Team-work
 - Papers
 - Case study



Immigration

移民



Applying for your U.S. Visa

簽證申請

Pay the I-901 SEVIS fee

Complete the DS-160 form online

Pay the **visa application fee**

Make an **appointment** with the Consulate

[U.S. Visa Application Website](#)

Tips: applying for your U.S. Visa

簽證申請

- Apply for your visa as early as possible
- Students may be issued F-1 visas up to 120 days before the I-20 program start date
- Be prepared to demonstrate your intent to return home after you complete your academic program
- The following will provide a list of generally required documents for your visa application
 - [U.S. Department of State F-1 visa application information](#)
 - [U.S. Department of State J-1 visa application information](#)

Preparing for Your Arrival

在出發以前 ...

- Check your [I-94 online](#) to be sure you were admitted to the U.S. in the correct immigration status
- Plan to attend all of the international student orientation
- Confirm when your mandatory check-in will be, and be sure to be there at the start of the check-in
- Make arrangements for transportation to campus before you arrive.

Preparing for Your Arrival

在出發以前 ...

- Make arrangements to transfer money to the U.S. after you arrive and open a bank account.
- Any amount/combination of money (cash, money order, travelers' checks) over \$10,000 must be declared in an advance on a U.S. Customs and Border Protection Declaration Form 6059B.
- Make temporary housing arrangements before you arrive, if you plan to arrive before you can enter your dorm room or apartment.

To Maintain Your Immigration Status

在美期間保持合法的移民身份

- Maintain good academic standing and make progress towards degree program requirements
- Enroll full-time during academic year (Fall & Winter semesters)
- Undergraduate = 12 credits per term; Graduate = 8 credits per term; Graduate students with GSI/GSRA appointments = 6 credits per term
- Maintain valid passport and I-20
- Maintain health insurance coverage
- May work on-campus up to 20 hours each week during academic year
- May work more than 20 hours each week during breaks/vacation period
- May not work off campus without proper work authorization

FAQs for Newly Admitted Students

- **Immigration Documents (Visas, I-20s, etc.)**
- **Travel**
- **Late Arrivals/Deferrals**
- **Fall Semester Status**

Orientations & Beyond

新訓與展望



United States/Midwest Culture

美國中西部文化

- Midwest Americans are friendly, but they like to keep private life private. Don't be surprised if it takes a while to make close friendships.
 - Smiling, saying good morning/hello, but no conversation following
 - Don't ask: age, weight, sexual orientation, relationship status, political views, income level, etc. when initially meeting people.
- U-M is diverse. You will get to know people from all over the world and from many backgrounds.
- You usually need to be invited over; potlucks are typical.
- Expect to “line up” in the USA when waiting for service.
- Diversity, Equity, & Inclusion ([DEI](#)): gender pronouns, accessibility, etc.

Common Challenges

留學生常見的挑戰

- Homesickness
- Loss of support systems
- Lack of meaningful relationships
- Language difficulties
- U.S. immigration regulatory restrictions
- New approaches to learning
- Changing sense of identity
- Unrealistic expectations from family & self
- Financial problems
- Difficulties in home country
- New ways of doing things



Campus Involvements 社團與活動

Taiwanese Student Association (TWSA)

for undergraduate students



Michigan Taiwanese Student Association (MTSA)

for graduate students



Campus Involvements 社團與活動

Maize Pages

- Find any student organization
 - Search by type of organization
 - Search by name
- Discover events happening nearby
- Track your involvement in clubs

Check with your departments about their own student organizations

International Center Student Council

- Identify and examine issues affecting international students
- Organize several events throughout the year.



Campus Involvements 社團與活動

FestiFall and NorthFest

- Explore hundreds of student organizations
- Happens on Central and North Campus
- Free giveaways, games, and activities
- Best way to start finding your community



Happening @ Michigan

- Search for any event happening on campus
- Calendar view of events
- Dozens of events listed for every day



Career Resources

就業資源



Career Services Offices:

- [University Career Center](#) (for all students)
- [LSA Opportunity Hub](#) (literature, science, and art undergraduate students)
- Career Services in other Schools & Colleges

International Center:

- Finding internships in and outside the U.S.
- Understanding U.S. Workplace Culture
- International Alumni Career Panel
- International Career Pathways

Tips:

- Be proactive
- Build cross-cultural knowledge
- Volunteering
- Learn practical skills

Orientations

Undergraduate Students:

- Wolverine Online Orientation

Graduate Students:

- [Rackham Fall Virtual Welcome](#)
- Your school or department may offer an orientation. Speak with your academic department about its specific orientation.



TWSA and MTSA: orientations for new Taiwanese students

International Center Summer Orientation

國際中心暑期新生訓練

Workshops:

- Address practical needs: banking, transportation, driving, car, health care, legal issues...
- Academic support: library basics, cultural differences in the classroom, communicating with academic advisers...
- Health and wellness: health services, managing stress, making friends, getting involved..
- Employment: finding a job on campus, tax forms

Ask Me!: a virtual meeting designed to support new international students

Virtual Chats with Orientation Peer Advisers



- International Picnic
- American Football 101
- Lunch and Learn Series
- Meet, Eat, and American Life (MEAL) @ Michigan
- International Student Lunch Conversation
- Birthday Celebration
- International Coffee Hour
- Taste of Culture Series
- Cultural Excursions
- Immigration Workshops
- Career Workshops
- Income Tax Preparation
- Education Abroad Advising
- Graduation Reception

**Check your umich email for important information and announcements.*

International Center Programs

國際中心活動



Helpful Links 連結

General Information:

- [International Student Welcome Booklet](#)
- [Areas of Student Life](#)
- [Packing List](#)
- [U-M Lingo](#)

Health, Wellness, & Safety:

- [Michigan Medicine](#)
- [University Health Services](#)
- [Recreational Sports](#)
- [Division of Public Safety and Security](#)

Academic Resources:

- [Libraries](#)
- [Sweetland Writing Center](#)
- [English Language Institute](#)
- [Language Resources Center](#)
- [FAQ for LSA Undergraduate Students](#)
- [FAQ for Engineering Undergraduate Students](#)

Career Resources:

- [University Career Center](#)
- [Career Services Offices](#)

Housing:

- [On-campus housing](#)
- [Off-campus housing](#)
- [Craig's List](#)
- [安娜堡華人網](#)
- [Rental Scams](#)
- [Legal Services](#)
- [M | Dining](#)
- [Storage Services](#)

Community:

- [International House Ann Arbor](#)
- [International Neighbors](#)
- [Michigan Language Center](#)

Transportation:

- [IC transportation page](#)
- [U-M Logistics, Transportations & Parking](#)
- [The Rides routes & schedules](#)
- [Detroit Connector](#)
- [Michigan Flyer \(Airport\)](#)
- [Zipcar, Enterprise](#)

Banking:

- [IC banking page](#)
- [Local banks comparison](#)

Campus Involvements:

- [Maize Pages](#)
- [International Center Student Council](#)
- [Taiwanese Student Association \(undergraduate\)](#)
- [Michigan Taiwanese Student Association \(graduate\)](#)
- [Happening @ Michigan](#)

Phone Apps:

- [Michigan App](#)
- [DPSS Safety App](#)
- [21 Apps to help you conquer your first year at U-M](#)

Important U.S. Federal and Privacy Laws:

- [Family Educational Rights and Privacy Act \(FERPA\)](#): 保護學生教育紀錄隱私的聯邦法
- [Health Insurance Portability and Accountability Act \(HIPAA\)](#): 有關查看即獲得健康信息作出規定的聯邦法律

COVID-19 Updates:

- [Public Affairs](#)
- [International Center](#)
- [FAQs for Newly Admitted Students](#)

Q & A



[Please complete the evaluation survey
by clicking here or scan the QR code below](#)



Safe Travels & See you in Ann Arbor!



www.internationalcenter.umich.edu
icenter@umich.edu
+1 734-764-9310



STUDENT LIFE

INTERNATIONAL CENTER